

Accountability Tracker (Report Card): Domestic Violence & Abuse

Review Period: April – June 2014

Overall Progress: ■ (RAG)

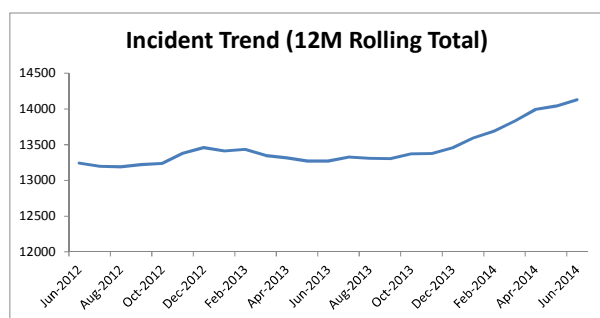
Performance

Domestic Abuse Incidents

In the 12 months to the end of June 2014, there were 14,128 recorded incidents and 4,780 repeats. The repeat rate (33.8%) represents a drop in prevalence from the previous 12 months

Leeds	Jul 2013 to Jun 2014		
	12 Month Total	12 Month Change	12 Month Trend
Domestic Abuse Incidents	14128	858	
Repeat Victims	4780	45	
Repeat Victim Prevalence	33.8%	-1.8%	
Repeat Suspects	2287	2287	
Repeat Suspect Prevalence	16.2%		

The incident trend shows a marked increase in reporting over the last 12 months.



Diagnostic Measures

Leeds	Jul 2013 to Jun 2014		
	12 Month Total	12 Month Change	12 Month Trend
Verbal Dispute	57.1%		
Violence	25.2%		
Breach of Peace	5.9%		
Criminal Damage	3.9%		
Other	7.9%		

Arguments, abuse and physical violence are the most commonly reported domestic abuse related incidents to the Police.

Ward	WYP Reported Domestic Abuse Incidents				
	Jul 2013 to Jun 2014			Apr 2014 to Jun 2014	
	12 Month Total	12 Month Change	12 Month Trend	3 Month Total	3 Month Change
Gipton & Harehills	1121	+84		272	-21
Burmantofts & Richmond Hill	1050	+20		237	-5
Armley	873	+167		235	+23
Killingbeck & Seacroft	851	-8		227	+12
Beeston & Holbeck	724	+93		195	+22
Middleton Park	842	-33		194	-17
Bramley & Stanningley	655	+82		167	+16
Chapel Allerton	540	+53		152	+17
City & Hunslet (Not City)	629	-76		133	-21
Farnley & Wortley	501	-5		131	+8
Hyde Park & Woodhouse	432	+80		130	+34
Crossgates & Whinmoor	443	+69		126	+13
Kirkstall	421	+49		120	+10
City & Hunslet (City)	393	+46		100	+14

PROTECT Produced by Safer Leeds (Leeds City Council)
All information is derived from provisional data before it is finalised and published as public statistics.
No data from this report can be quoted in the public domain
Ward is assigned by "best match" and sums of data will not necessarily equal Leeds totals (due to "unmatched" information etc.)

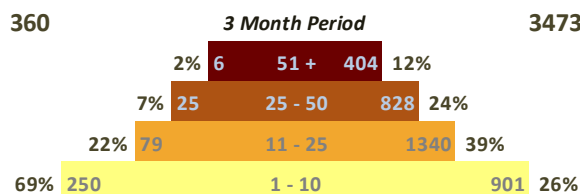
Prevalence

Cells (500m)

360

Incident Reports

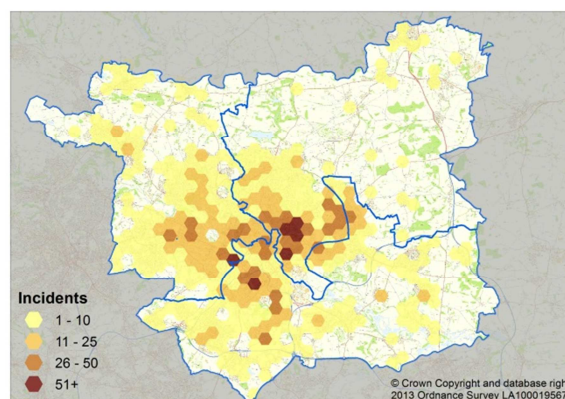
3473



Prevalence (Incidents per Cell)

The majority of areas with reported domestic abuse had less than 10 incidents in the 3 month period (69% of areas, accounting for only 26% of reports).

However, there are significant areas of high reporting; 9% of areas with reported DV had over 25 incidents in 3 months, accounted for 36% of the total reported.



Story Behind the Headlines

Where domestic violence is reported to agencies, the majority of victims are female (79.5%).

The police make an arrest at more than 1/3rd of incidents (36.4%).

Police records show over three-quarters (76.7%) of victims in 2013/14 were aged between 20 and 49 years, with a clear bias towards younger adults (16-19=7.9%, 20-29=33.9%, 30-39=24.0% and 40-49=18.8%)


Children were present at over a third of West Yorkshire Police recorded domestic abuse incidents (35.6%).

Issues/Risks

- w Number of DHRs
- w STOP (externally funded perpetrator services) funding has ceased.
- w Capacity on the DV team ~ leaders have agreed to secure additional staff.

Accountability Tracker (Report Card): Domestic Violence & Abuse

Review Period: April – June 2014

Overall Progress:  (RAG)

What We Did (Key Examples)

8 Domestic Homicide Reviews are being undertaken with a further 2 being scoped. A DHR Policy and Procedures Manual is currently being development.

3 x training sessions to GPs were delivered to promote learning from DHR6; encourage triggered enquiry; DV flagging and information sharing.

Initiatives are in place to promote early guilty pleas including utilising Bad Character Evidence; special measures in Court and Restraining Orders. This has contributed to Leeds achieving the lowest attrition rates for DV across West Yorkshire.

Contract Managers are being trained to undertake the DV Quality Mark as part of their performance management of providers.

A requirement to attain the DV Quality Mark has been integrated into the commissioning arrangements for new drug and alcohol services.

Housing Options have been quality assured and attained the DV Quality Mark.

A customer feedback report based on approx. 350 survey responses is being produced to inform a customer feedback process to be piloted by key services.

Adolescent to Parent Abuse (APA) training is being rolled out to staff working with families and an APA conference was held on 15th July with speakers from the Youth Justice Board and Leeds PACT was showcased.

Housing Support reviewed 56 sanctuary installations carried out during April and May 2013. The number of tenancies sustained to date is showing as 80.36%.

A DV website is being developed and will be launched in Oct 2014.

A series of city and café conversations are being held to raise awareness of the impact domestic violence, what help is available and to galvanise new and existing partners ~ including public, private and voluntary sector organisations.

A DV Conference is being organised for Oct 2014.

New Actions

- § Production of a business case to support a daily MARAC model will be formulated with intention of improving the response to high risk victims ~ this follows a visit to Wigan.
- § The DV Quality Mark for services is being developed in order to quality assure cluster based work with children and young people, GP practices and private sector agencies. Cluster work is being re-launched to improve services to children and young people
- § The Caring Dads programme pilot (4 groups) is being extended to include a further 3 groups. External evaluation will be undertaken.
- § The refreshed LCC Domestic Policy will be finalised and disseminated through a variety of media.
- § The Leeds Anti -Social Behaviour Team will be supported to attaining the DV Quality Mark.
- § An assertive engagement framework for perpetrators is being produced.
- § A meeting will take place to consider how Scrutiny recommendations and NICE guidance are included in programme deliverables and any commissioning plans
- § Benchmarking questionnaires have been completed and returned by 5 other Yorkshire local authorities. These will be used to improve learning and sharing good practice.
- § Relationships will continue to be developed with Leeds Rhinos and other sporting clubs for public awareness opportunities and support.

Information/intelligence requirement

- § Produce a 'proof of concept' locality profile on South Leeds. This will examine prevalence and impact; identify risks, threats and harms from a range of data (including Police, Children's Social Care, Adult Social Care, Housing, A&E, Benefits, and overlaid with Demographic (Acorn & Census) with consultation from local service providers. The document will inform a local delivery plan, linking in with the city domestic violence and abuse strategy.